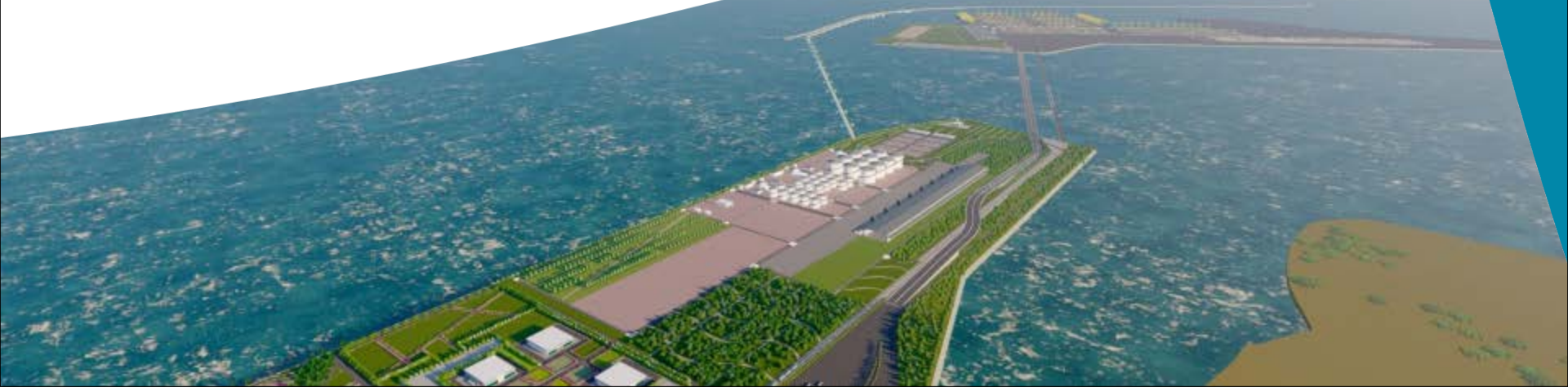




Development of Greenfield Vadhavan Port

*Tender Package 2A – Nearshore Reclamation
and Shore Protection Bund*

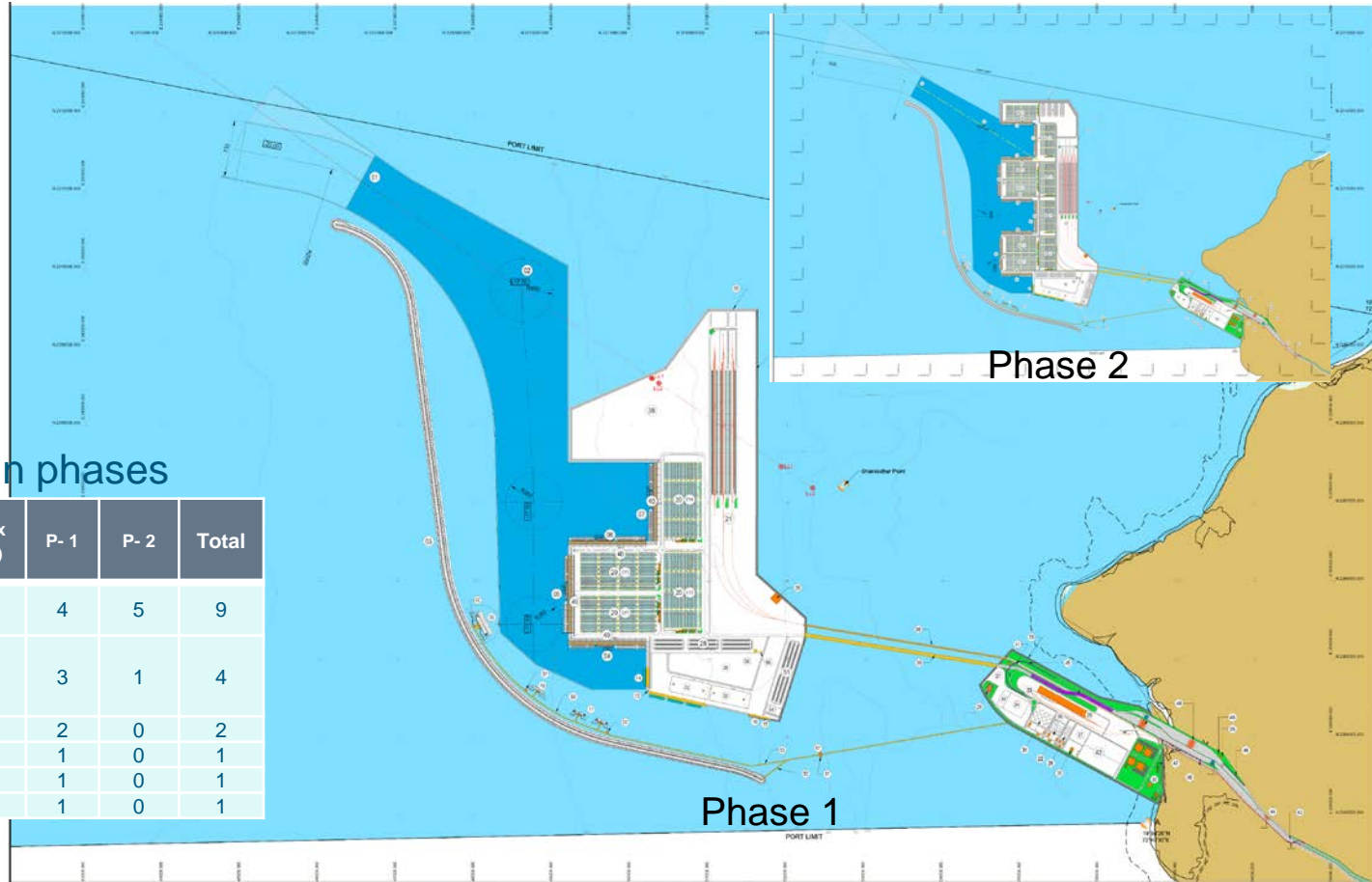
November 2024



SALIENT FEATURES OF VADHAVAN PORT

- ❑ SPV Vadhavan Port Project Limited (VPPL) (JV of JNPT and MMB)
- ❑ Notification as Major Port on 19th Feb. 2020
- ❑ Located ~150 Km north of Mumbai
- ❑ On completion, container capacity of ~24.5 Million TEUs
- ❑ Reduction in logistic cost and provide hinterland connectivity through Mumbai-Delhi western railway line and NH-48
- ❑ Mode of Implementation – Landlord Model
 - Landlord - Breakwater of about 10.14 Km, Nearshore Reclamation and shore protection, 571 Ha (1410.97 acres) land for rail and road connectivity, Road and Rail connectivity.
 - Concessionaire (PPP) – Offshore Reclamation and shore protection bund, Port Cargo handling Equipments and utilities etc.
- ❑ Funding Agency – VPPL (a SPV of JNPA & MMB)

Master Plan and Phase 1 Port Configuration



Port will be developed in phases

Berths/ Terminals	Berth/ quay length (m)	Ship max draft (m)	P- 1	P- 2	Total
Container quay (1,000 m each)	1,000	16.5	4	5	9
Multi-purpose berths (250 m each)	250	10.5	3	1	4
Liquid bulk berths	200	9.5	2	0	2
Bulk liquids	280	10.5	1	0	1
Ro-Ro berth	250	11.3	1	0	1
Coastguard berth			1	0	1

The Phase 1 - Envisioned to have the following components

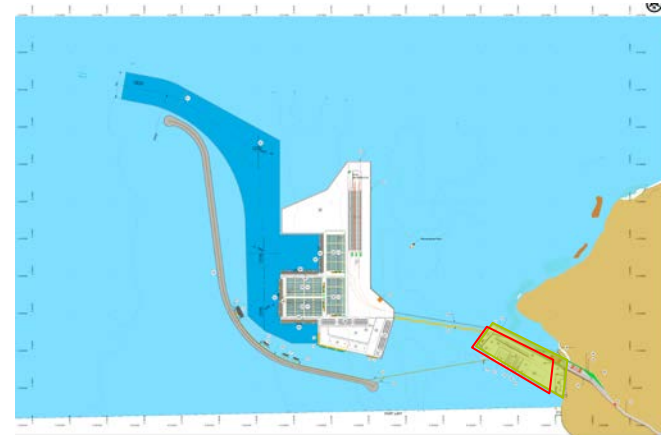
VPPL (Landlord)	Concessionaires	External Agencies Components
1. Offshore breakwater of total length of 10.14 km	1. Dredging in port approach, harbour basin of 7.01 million cum, Offshore Reclamation area of 1162 hectares with shore protection bund	1. External road connectivity – by National Highways Authority of India (NHAI)
2. Nearshore Reclamation and shore protection bund	2. Container terminals including yard storage, equipment, internal terminal pavements, drainage, utilities networks, etc., with berth length of 4,000 m (4 berths; each of 1,000 m length) capable of handling upto 24,000 TEU vessels with 24,000 TEU design container vessels.	2. External Rail Connectivity and linkage to Indian Railways and Dedicated Freight Corridor (DFC) – by Western Railways (WR)
3. Port craft/Tug berth of 200 m	3. Multipurpose berths of 750 m (3 berths; each of 250 m) including equipment, storage yard / shed	3. External utilities
4. Road inside the port: 33.4 km	4. One Roll-On-Roll-Off (Ro-Ro) berth of 250 m including storage and onshore facilities.	(i) Water supply – by Maharashtra Jeevan Pradhikaran (MJP)
5. DFC rail yard 290 hectares.	5. Three Liquid berths with service platform, mooring and breasting dolphin arrangement including pipelines and tankfarm.	(ii) Power supply – by Maharashtra State Electricity Transmission Corporation Limited (MSETCL)
6. Buildings		
7. Pavements inside the port.		
8. Land acquisition		

Procurement of Works by VPPL

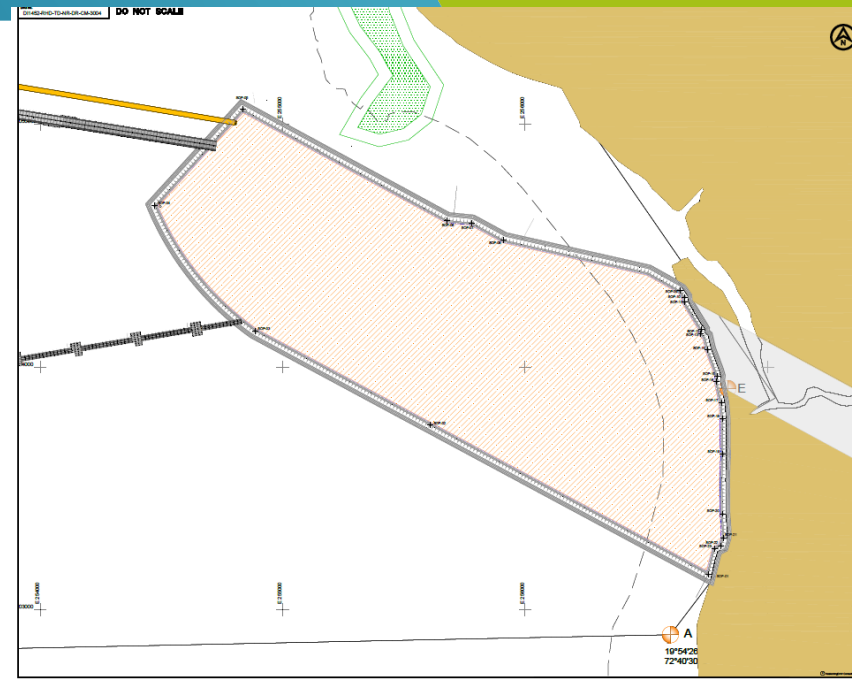
- Bidding process
 - Single stage bidding process (e-procurement)
 - Two Envelop bid system (EMD and Bid security, Technical-Bid), and (Price-bid)
 - Lumpsum price contract based on FIDIC Yellow Book
 - Evaluation of EMD, Bid Security, Technical-bid to ascertain conformity with the bid condition.
 - Opening of (Price-bid) of qualified (Technical-bid)
 - Selection of L1 based on Lowest Cost

Package 2A – Nearshore Reclamation upto +6.8 m CD (MSL -2.8 m CD) and Shore Protection Works

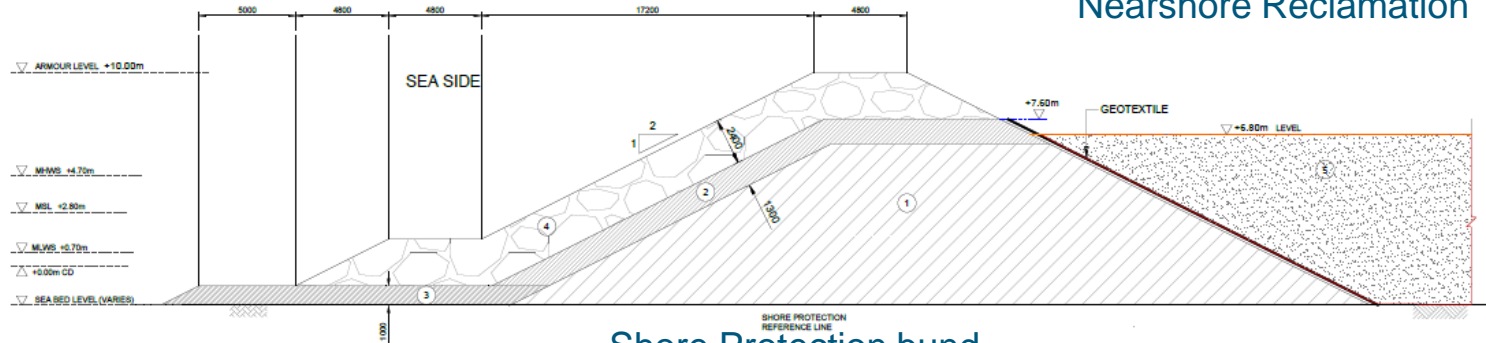
- ❑ Nearshore reclamation area depth varying from +3.5 m CD to -2 m CD.
- ❑ Reclamation to +6.8 m CD
- ❑ Indicative quantity of 14.5 M cum
- ❑ Reclamation through material sourced from marine borrow pit/ land quarries
- ❑ Near Shore reclamation bund ~7 km
- ❑ Access to project site from existing network of road within vicinity of project site is in scope of contractor.
- ❑ Comprehensive EC for the project at Dahanu and Daman
- ❑ Any local issues to be resolved by the Contractor



Project Layout



Nearshore Reclamation



Shore Protection bund

Gist of Prebid Queries

- Modification in PQ criteria for experience and key construction activities
- Project Duration
- Site data on bathymetry and details of quantities
- Status of Statutory clearances – Environmental Clearance, CRZ, DTEPA
- Sourcing of material – quarry for stone and murrum, sea sand.
- No arrangement of quarries from Employer
- Schedule of Payments
- Access to the site and local issues
- Reduction in Bid Security and instruments
- Extension for Query submission and bid due date

Site Information

Reports	Volumes	Availability and Access to Documents
Field Surveys and Investigations	<ul style="list-style-type: none"> Marine Geotechnical Investigation Report Geophysical survey for the Marine Borrow Pit nearby Vadhvan Oceanographic Investigation Report 	<ul style="list-style-type: none"> The documents have been provided along with the Tender Document and are available in CPP Portal.
Mathematical Model Study Report (CWPRS)	<ul style="list-style-type: none"> Model studies for Tidal hydrodynamics and Siltation for revised layout of Phase 1 and Master Plan for Port at Vadhvan (Nov. 2021) Model Studies for Assessment of Wave Tranquility for modified final layout of proposed Vadhvan port (Nov. 2021) Impact of proposed port development at Vadhvan on flooding in Dahanu Creek and nearby control area under cyclonic conditions (Oct. 2023) 	<ul style="list-style-type: none"> The study reports are for the information and reference for the bidders. Independent interpretation shall be construed as opinions only and not the representations or disagreement relating to site conditions. The documents can be accessed and downloaded free of cost from VPPL official website: www.vadhvanport.in/media centre/
Other Reports	<ul style="list-style-type: none"> Vadhvan Environmental Impact Assessment Report Notification on Environmental Clearance and CRZ 	<ul style="list-style-type: none"> The documents can be accessed and downloaded free of cost from VPPL official website: www.vadhvanport.in/media centre/

Scheduled Dates

	Schedule of Dates	Date & Time
i)	NIT	10.10.2024
ii)	Downloading of Tenders	From 22.10.2024 onwards
iii)	Last date for receiving Prebid Queries	04.11.2024, 15.00 hrs. IST
iv)	Prebid Meeting	06.11.2024, at 11.30 hrs. IST
v)	Clarification to Prebid Queries	11.11.2024
vi)	Tender Submission (Bid Due Date)	On or before 04.12.2024, 15.00 hrs. IST
vii)	Tender Opening	05.12.2024, 15.30 hrs IST

Thank You

